

RISHIRI GALAXY 26,396 DWT Oil/Chemical Tanker 20

[Contents](#)

[By Builder](#)

[By Ship Type](#)



RISHIRI GALAXY 26,396 DWT Oil/Chemical Tanker 20

Contents By Builder By Ship Type

The 26,396 dwt type chemical carrier RISHIRI GALAXY was built at SHIN KURUSHIMA DOCKYARD CO., LTD. and delivered to TRADEWIND NAVIGATION S.A. in February 2023.

Features

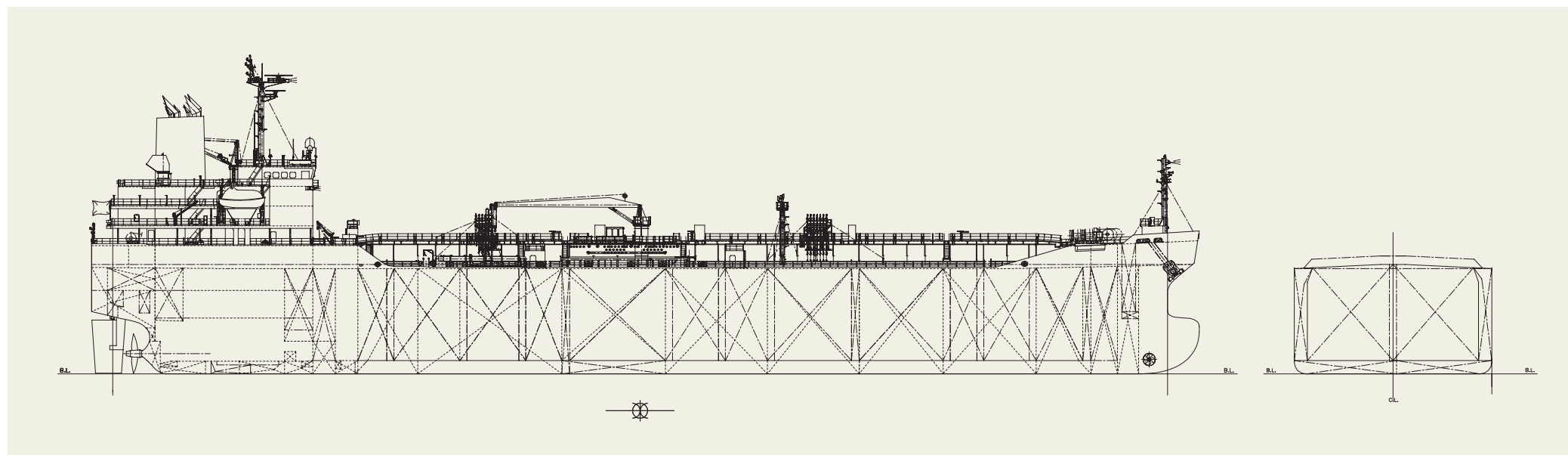
1. The vessel was built for ocean transport of chemicals (IMO type II and III) and oil products.
2. The vessel has twenty- three (23) cargo tanks constructed of SUS316LN stainless steel and SUS316LN clad steel.
3. All cargo tanks (including slop tanks) are of double-hull structure and have sufficient strength to permit the carriage of a full cargo with a specific gravity of 1.30 t/m³.
4. Structures protruding into the tanks have been minimized by using an on-deck girder system for the upper deck and vertical corrugated type bulkheads.

5. Each cargo tank is equipped with one (1) submerged cargo pump driven by a hydraulic motor; these are remotely controlled from the cargo control room.

6. Cargo handling is simplified by a 10 metric-ton hydraulically operated deck crane for hose handling; it is arranged a midship on the upper deck.

PRINCIPAL PARTICULARS

Length (o.a.)	157.03 m	NOR (kW × rpm)	5,483 kW x abt. 112 min ⁻¹
Length (b.p.)	149.50 m	Speed (service)	14.8 knots
Breadth (mld.)	28.00 m	Complement	26P
Depth (mld.)	14.90 m	Classification	NK
Draft (mld.)	9.00 m	Cargo pump	Submerged type
Gross tonnage	18,287		330 m ³ /h x 115 mLC x 13 sets (based on S.G. 0.8)
Deadweight	26,396 t		200 m ³ /h x 115 mLC x 10 sets (based on S.G. 0.8)
Main engine	6UEC42LSH-Eco-D3-EGR		70m ³ /h x 70 mTH x 1 set (based on S.G. 1.0)
MCR (kW × rpm)	6,450 kW x 118 min ⁻¹	Loading capacity (tank)	30,258 m ³
		Builder:	Shin Kurushima Dockyard Co., Ltd.



CHEMROAD ZENITH 35,777 DWT Oil/Chemical Tanker 21

[Contents](#)

[By Builder](#)

[By Ship Type](#)



CHEMROAD ZENITH 35,777 DWT Oil/Chemical Tanker 21

Contents By Builder By Ship Type

The 35,777 dwt chemical carrier CHEMROAD ZENITH was built at SHIN KURUSHIMA DOCKYARD CO., LTD. and delivered to the Panamanian Owner in June 2022.

Features

The vessel was built for ocean transport of chemicals (IMO type II and III) and oil products.

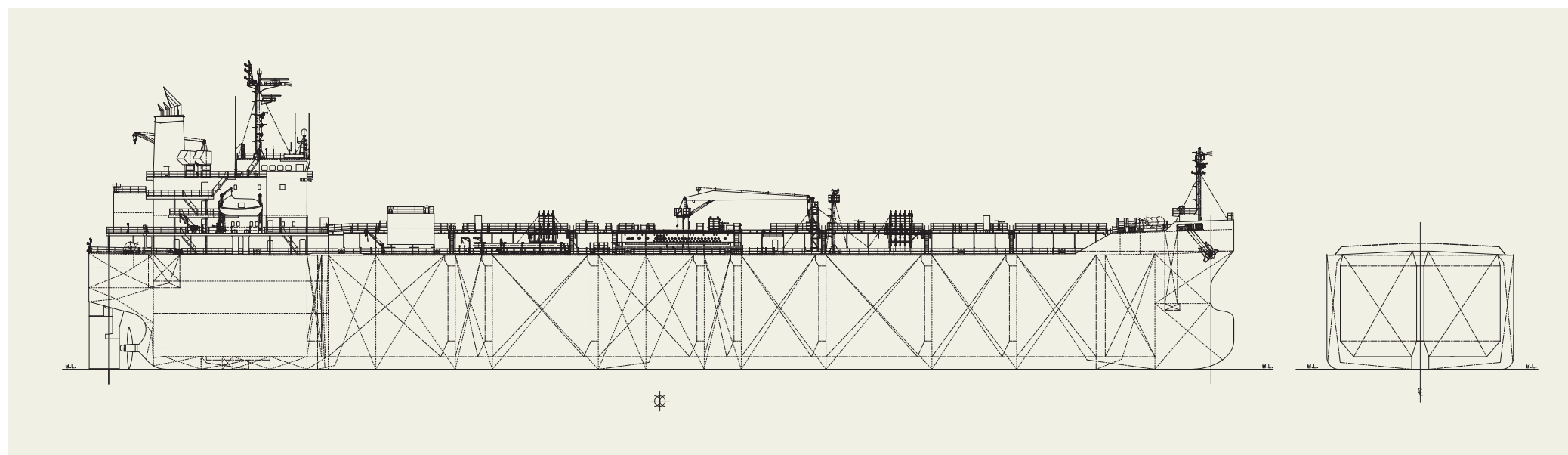
- The vessel has eighteen (18) cargo tanks (including slop tanks) constructed of SUS316LN stainless steel and SUS316L clad steel.
- All cargo tanks are of double-hull structure and have sufficient strength to permit the carriage of a full cargo with a specific gravity of 1.30 t/m³.
- Structures protruding into the tanks have been minimized by using an on-deck girder system for the upper deck and vertical corrugated type bulkheads.

5. Each cargo tank is equipped with one (1) submerged cargo pump driven by a hydraulic motor; these are remotely controlled from the cargo control room.

6. Cargo handling is simplified by a 10 metric-ton hydraulically operated deck crane for hose handling; it is arranged a midship on the upper deck.

PRINCIPAL PARTICULARS

Length (o.a.)	172.98 m	NOR (kW x rpm)	5,840 kW x abt. 89.0 min
Length (b.p.)	166.50 m	Speed (service)	14.5 knots
Breadth (mld.)	28.20 m	Complement	30 P
Depth (mld.)	17.20 m	Classification	NK
Draft (mld.)	11.40 m	Cargo pump	Submerged type
Gross tonnage	23,464		300m ³ /h x 115mLC (SG=0.80) x 14 sets
Deadweight	35,777 t		200m ³ /h x 115mLC (SG=0.80) x 4 sets
Main engine	6UEC50LSH-Eco-C3-EGR		70m ³ /h x 70mLC (SG=1.00) x 1 set (Portable type)
MCR (kW x rpm)	6,870 kW x 94.0 min	Loading capacity (tank)	39,790 m ³
		Builder:	Shin Kurushima Dockyard Co., Ltd.



KINSHU 4,999 DWT Oil/Chemical Tanker 22

[Contents](#)

[By Builder](#)

[By Ship Type](#)



KINSHU 4,999 DWT Oil/Chemical Tanker **22**

Contents By Builder By Ship Type

The 4,999-dwt Oils / Chemical Tanker KINSHU was built at SHIN KURUSHIMA HASHIHAMA DOCKYARD CO., LTD. and delivered to Japanese Owner. in March 2023.

Features

The vessel was built for ocean transport of oil products.

- 2. The vessel has twelve (12) cargo tanks constructed of Pure epoxy paint coating.
- 3. All cargo tanks are of double-hull structure and have sufficient strength to permit the carriage of a full cargo with a specific gravity of 1.025 t/m³.
- 4. Structures protruding into the tanks have been minimized by using an on-deck girder system for the upper deck and vertical corrugated type bulkheads.

- 5. The vessel has six (6) cargo pumps driven by electric motors remotely controlled from the ship's office.

PRINCIPAL PARTICULARS

Length (o.a.)	104.91 m	MCR (kW x rpm)	3,440 kW x 195 min ⁻¹
Length (b.p.)	101.90 m	NOR (kW × rpm)	2,924kW x abt. 185 min ⁻¹
Breadth (mld.)	16.00 m	Speedservice)	14.0 knots
Depth (mld.)	8.80 m	Complement	16P
Draft (mld.)	6.233 m	Classification	NK
Gross tonnage	4,248	Cargo pump	Screw type
Deadweight	4,999 t		370/270 m ³ /h x 0.83 MPa x 6 sets-
Main engine	MAKITA-MITSUI-MAN B&W 6S30ME-B9.5	Loading capacity (tank)	6,549 m ³
		Builder:	Shin Kurushima Hashihama Dockyard Co., Ltd.

